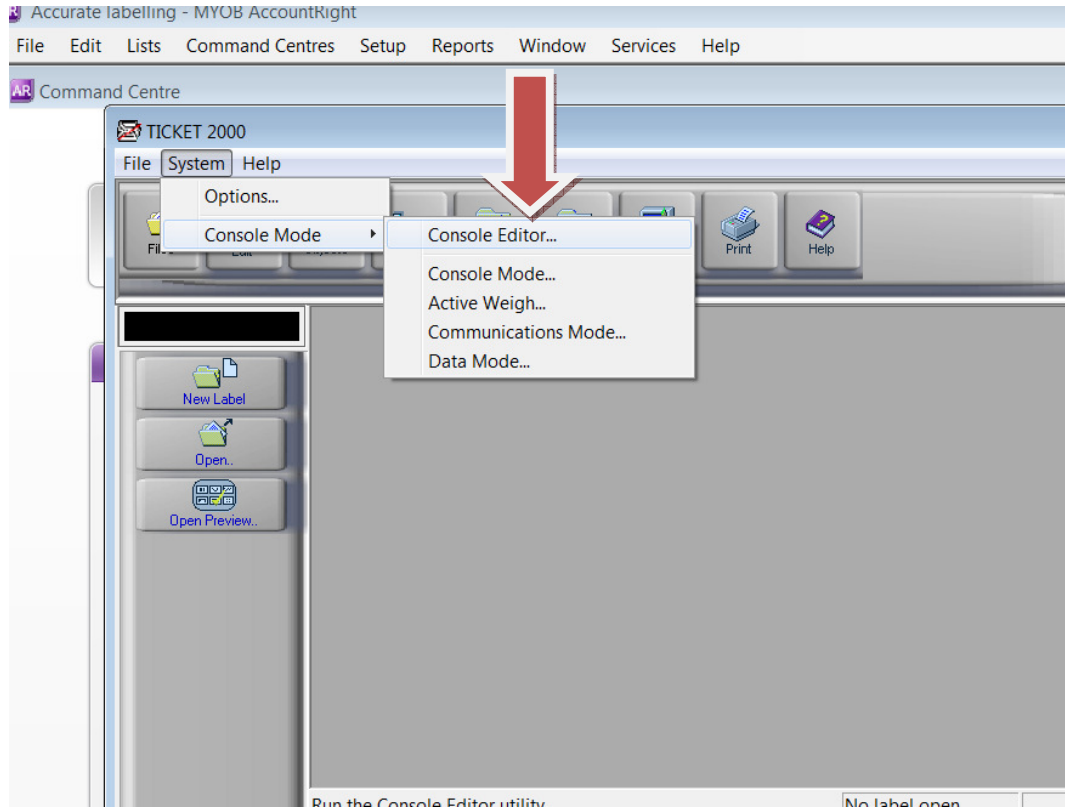


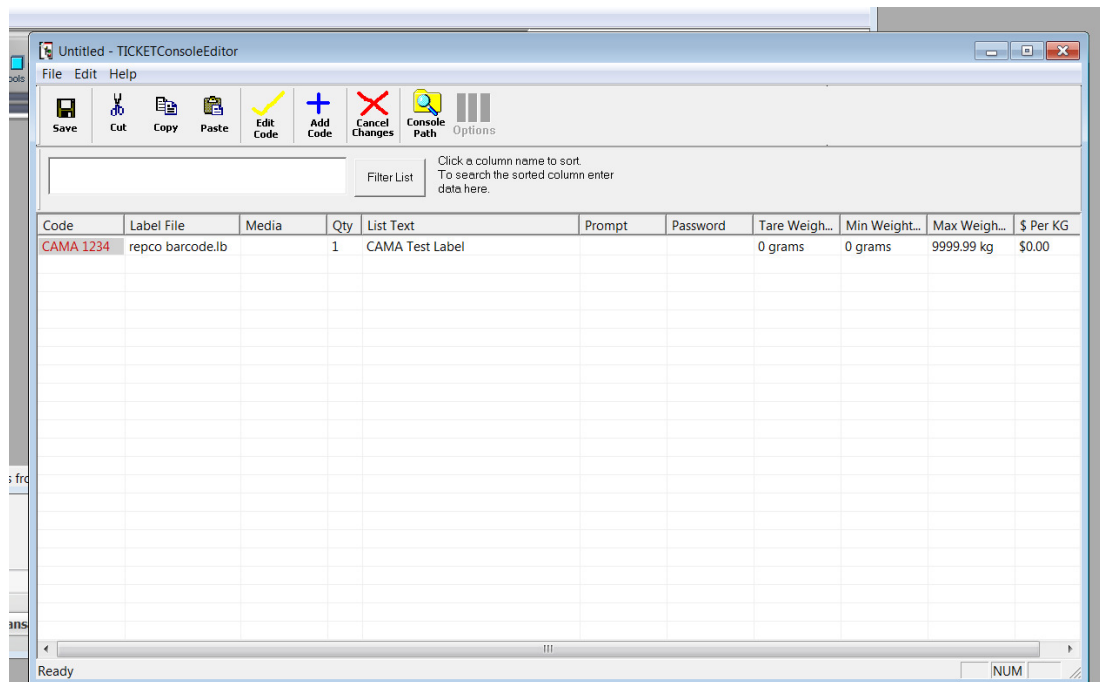
Console editor labels list

Open Ticket 2000 Design Mode.

Select: System/Console Mode/Console Editor



This will open up like this;



This is the complete list of labels currently used by your operators.

Under column "label File" you will see the correct label name of the label used

Under column " list text" this is what appears on the screen.

DO NOT DELETE ANY OF THESE LISTED. As they are being used.

Go to C: Program Files/TICKET/Labels.

Here you will find the labels listed above and a lot of extras.

Delete any label not listed above.

This should leave you with only the label files used.