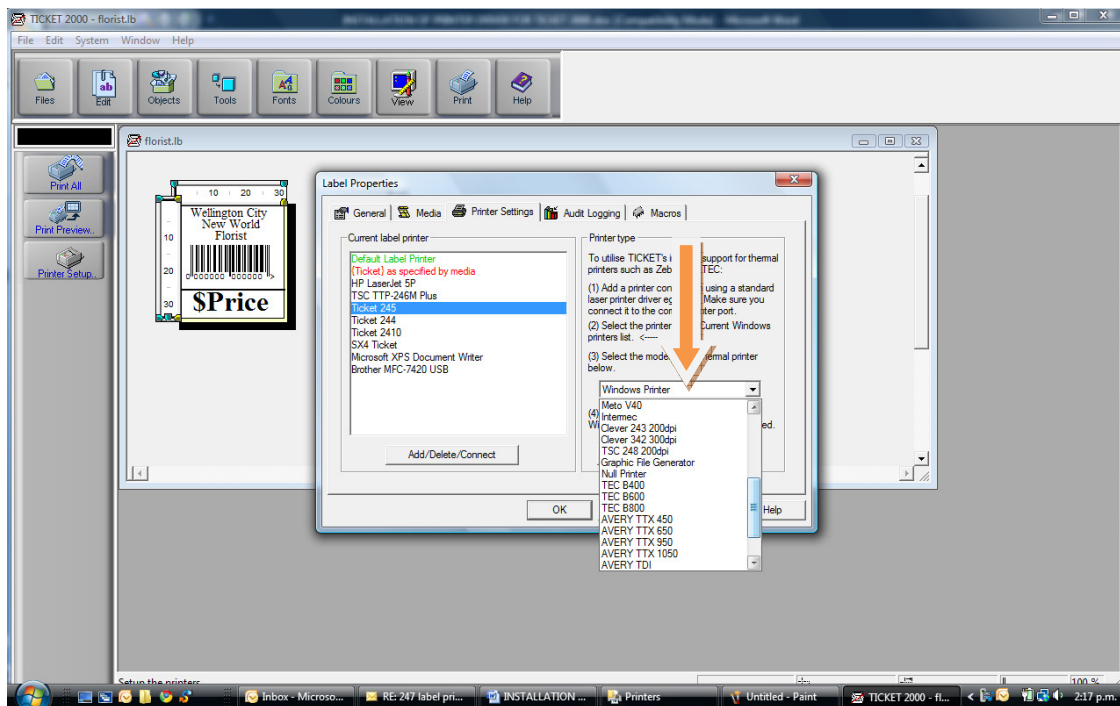
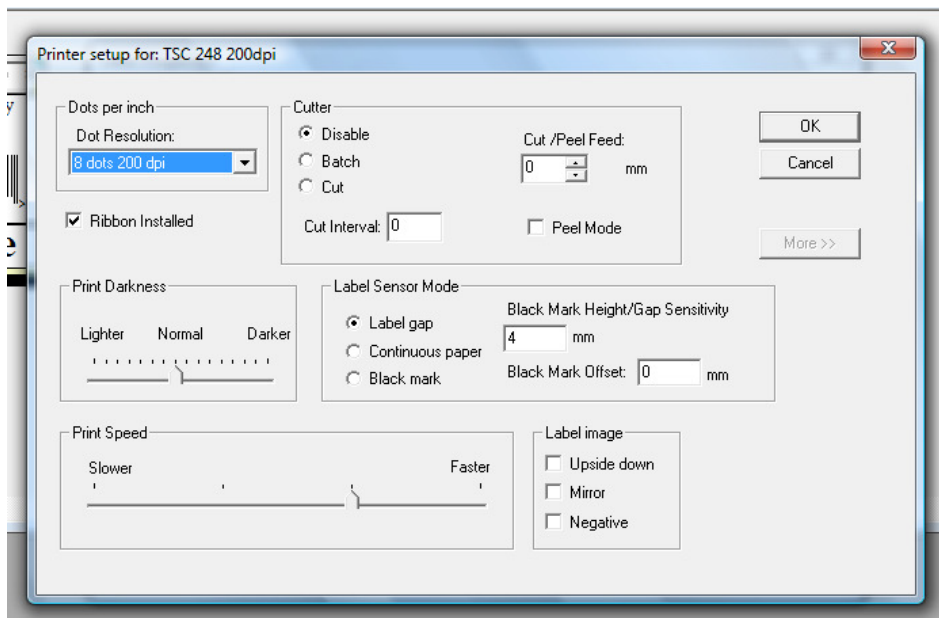


Changing printer properties in Ticket 2000

1/ Click Printer Set up.



2/ Select the Printer under the “ Current Label Printer” window as TICKET and then using the drop down window on the right select the model printer you are using. Then click “Properties” and the following will appear.



3/ Make the correct selection to suit your TSC printer and click OK, then OK and return to the label screen.

4/ Click on File icon and SAVE THE LABEL