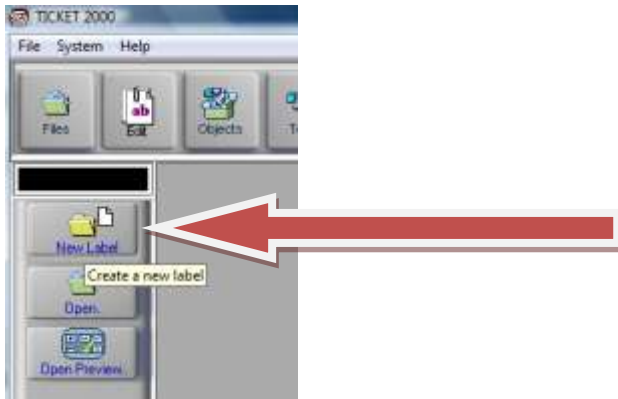


Creating labels in Ticket 2000.

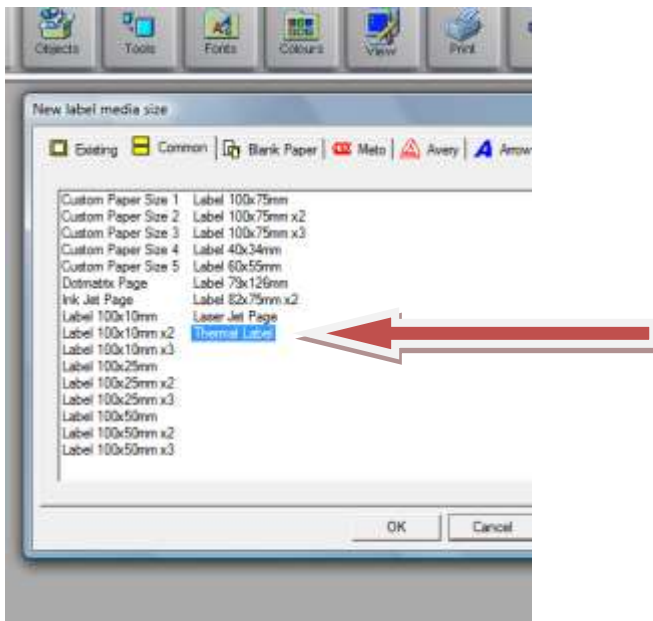
Ticket 2000 must be open and ready

Option One: NEW LABEL: Click on FILES ICON and in the left hand column select New Label



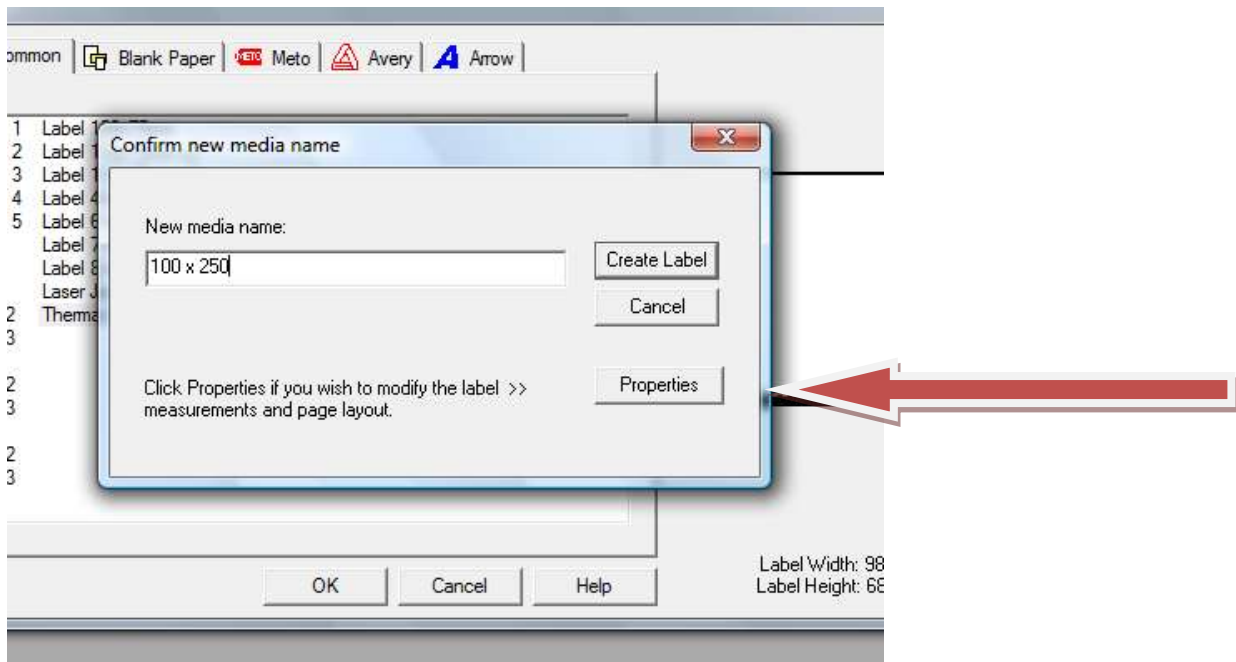
Click on the “Common “Tab and click **once** on Thermal Label. It will then appear as below

Then Click OK

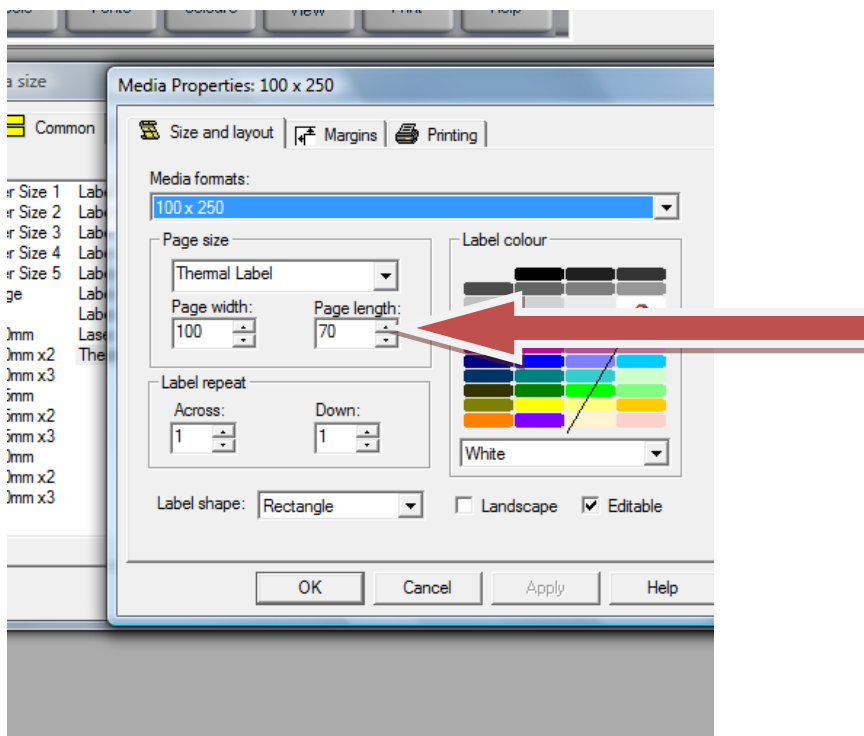


Where the words “ Thermal Label” are highlighted in BLUE put the name and or size of your new media. Media is the blank size of your label

Then CLICK “PROPERTIES”



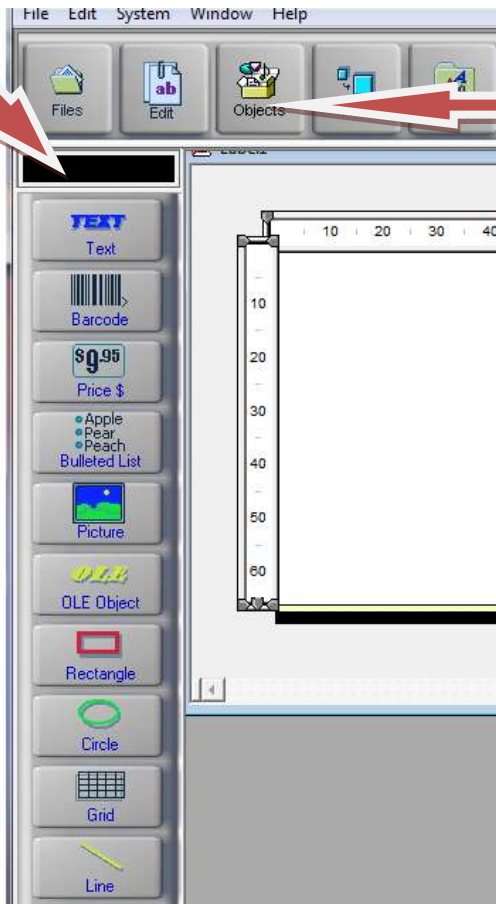
Select the " Size and Layout" Tab and enter the width and length of your label, in the Label Width and Label Length Fields.



NOW Click OK and your blank label will appear on the screen.

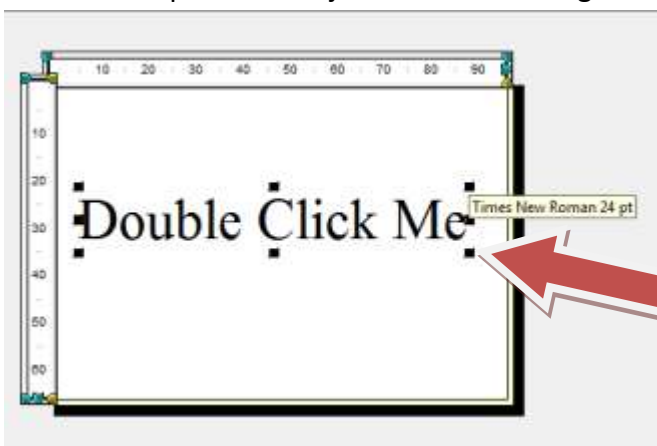
HOW TO PLACE OBJECTS ON TO YOU LABEL.

- When Ticket 2000 is open place the mouse above the objects icon and a list of objects will appear in the left hand column. (note some items are not active in all versions)

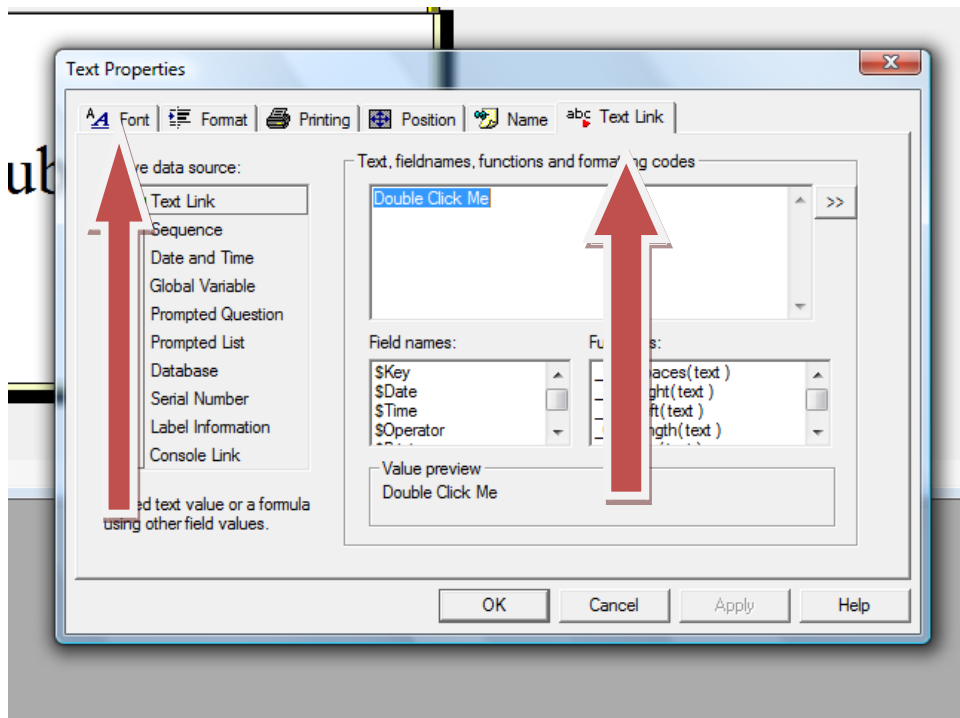


To place the object on the label CLICK AND DRAG the object to the label.

You can now place the object and resize using the handles.

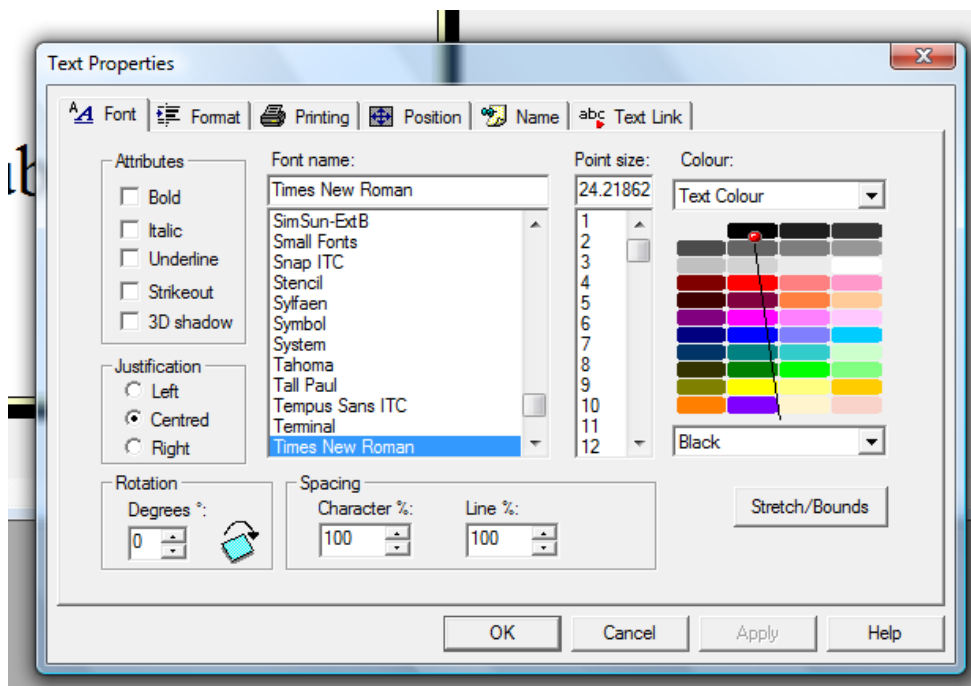


Double Clicking on the field will open the Field Properties

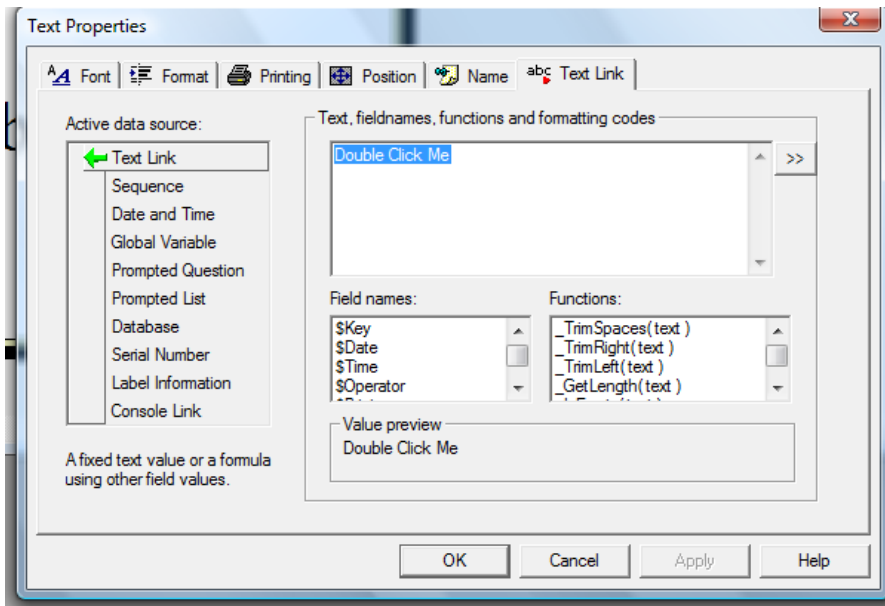


At this stage concentrate on the first tab (**Font**) and the last tab (**Text Link**).

The first tab is the appearance, font size, position etc of you text or field data. This tab is different under Barcode, picture, lines and others but serves the same purpose.

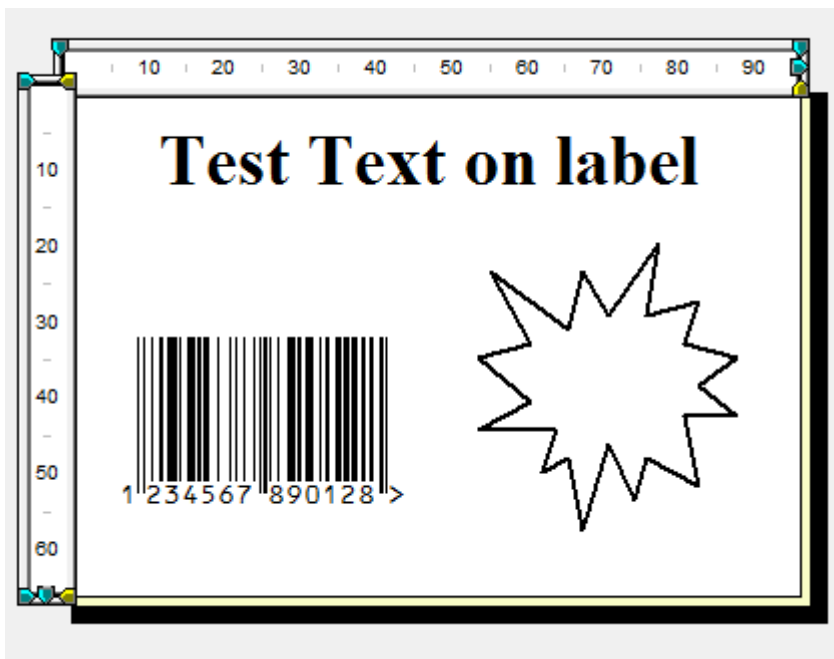


The last Tab, relates to the contents of the field be it a text, barcode or picture.



You will note the other options on this tab under Active Data Source. Please consult the user manual on CD for further information on how to use these options.

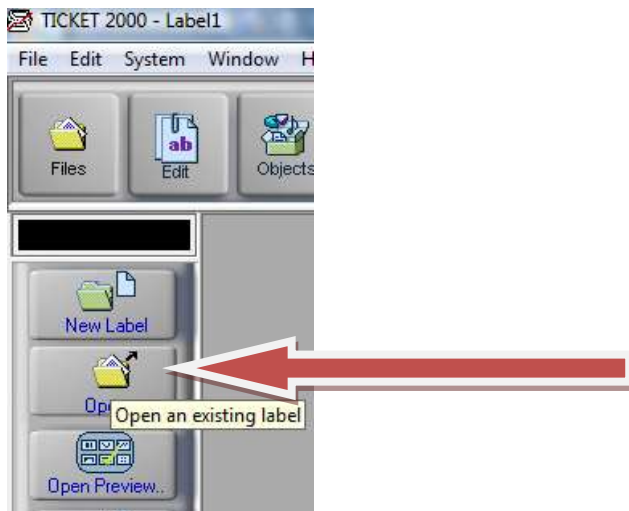
Once you have entered your data on in the field, click OK and return to your label and repeat for other fields as required.



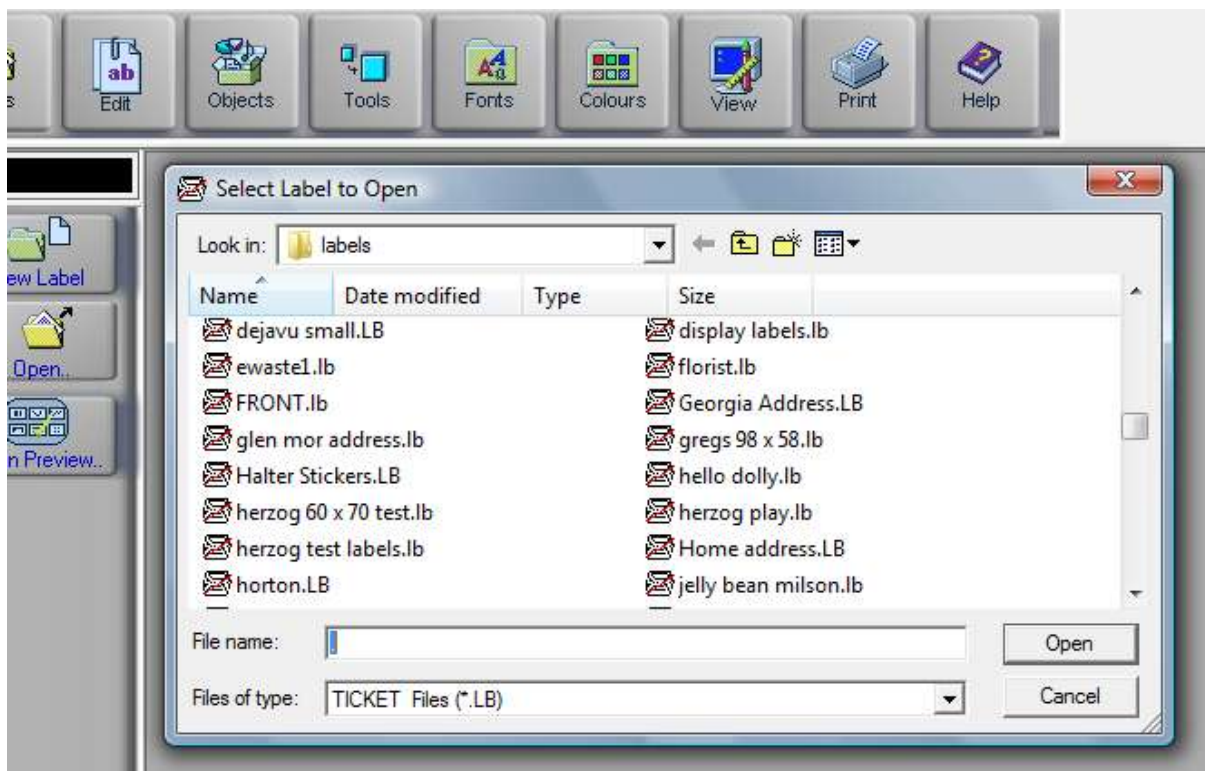
To Print this label go to Step 8

Option TWO OPEN AN EXISTING LABEL

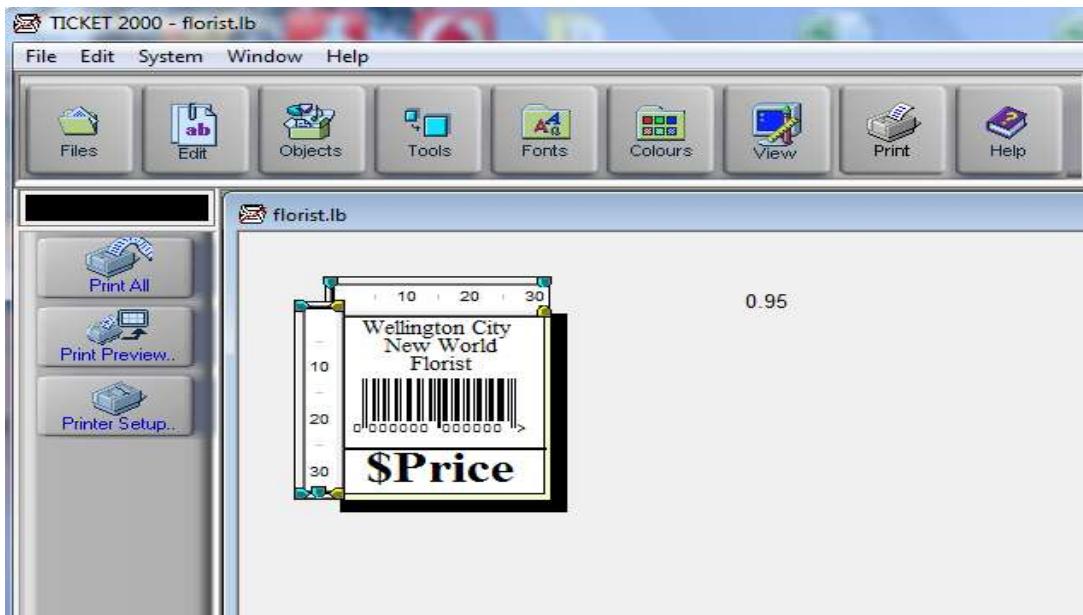
Click on FILES ICON and in the left hand column select OPEN



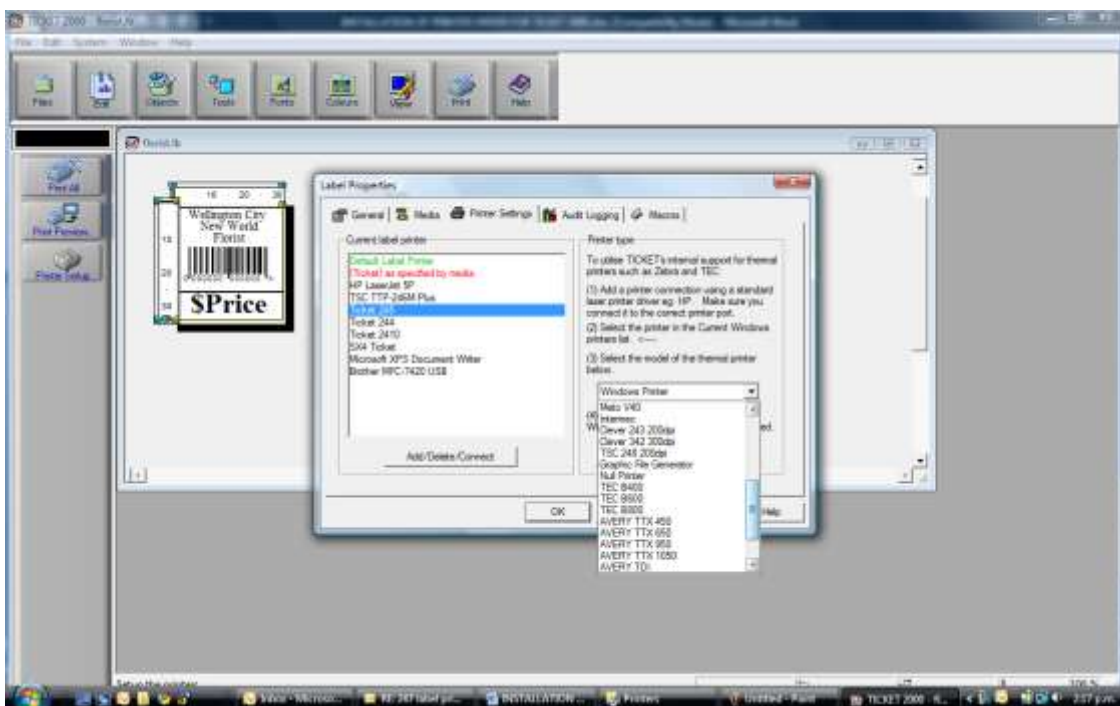
Double Click on the label you require below and the label will appear on the screen.



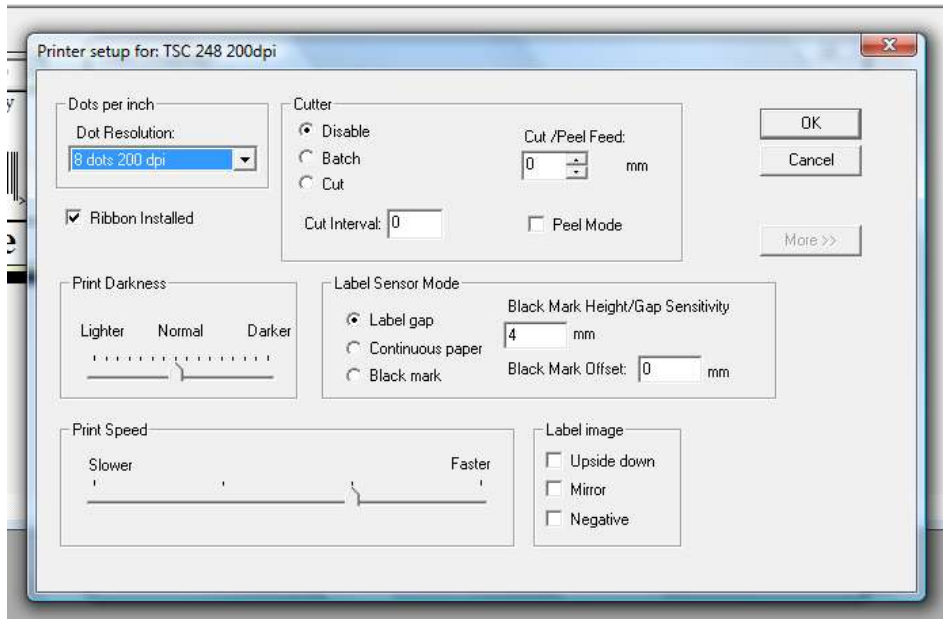
Step 8 Place the mouse over the PRINT icon and on the left hand column will appear PRINTER SET UP (You must have a label open for this to work)



Step 9 Click Printer Set up.



Step 10 Select the Printer under the “ Current Label Printer” window as TICKET and then using the drop down window on the right select the model printer you are using. Then click “Properties” and the following will appear.

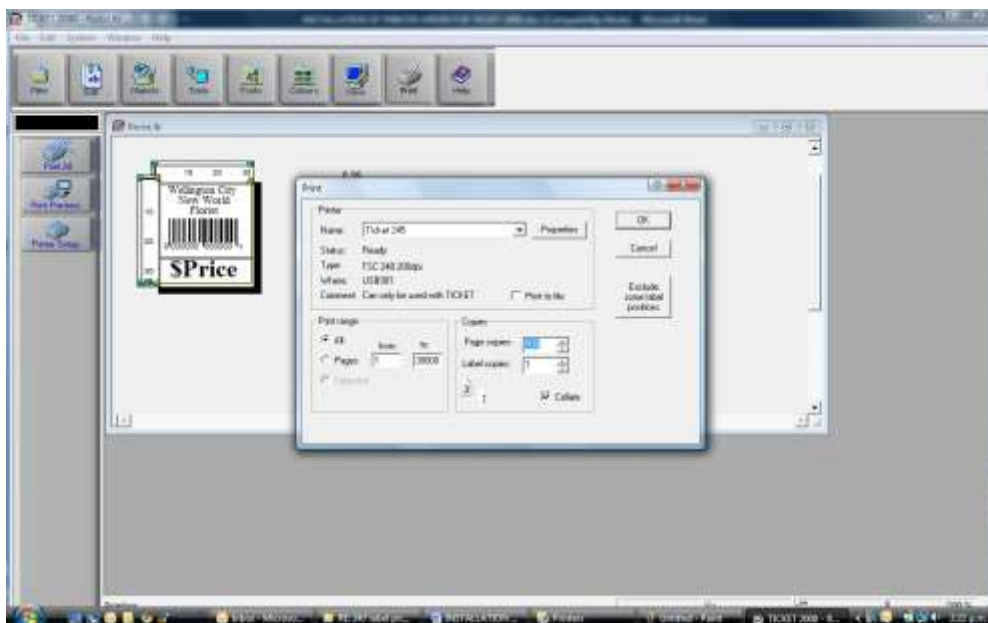


Step 11 Make the correct selection to suit your TSC printer and click OK, then OK and return to the label screen.

Step 12 Click on File icon and SAVE THE LABEL

Step 13 You will now be able to print the label by doing as follows.

- Double clicking the PRINT icon and selecting the TICKET printer in the printer name drop down box at the top.
- Then under “Page Copies how many labels you need and ensuring the correct print appears in the screen and then click OK.



Please note if you have installed the Limited version that comes with the TSC Thermal Printers, then there will be "Greyed out areas" that you can see but are not available in this version.

If there is a feature you wish to use you need to contact your Printer supplier and discuss the options to upgrade.

Other Versions Include:

Ticket 2000 with Database. This option allows you to interface to you excel or Access databases and even print direct from your excel spreadsheet. It has all Text functions enabled such as: Stretching, rotating, restrict characters per line, expand to fit, do not print and Macro functions. Macros allow you to program functions to occur before or after printing a label.

Ticket 2000 Full Version. This version comes with all of the above plus the following:

- Console Mode, operators mode only, Ideal for Factory and store environments where the operator cannot access the label designs
- Interface Mode: Used to allow ticket to pick up any file sent to a folder and automatically print from there. (File specifications are required)
- Weigh Mode, Interface to Scales for Weigh labelling of products
- Any special programme or interface written to be used with Ticket 2000 must have a full version.